

**Hernik**

**USER MANUAL**

**IPAI** **MAX** **MINI**



# TABLE OF CONTENTS

<b>I. General information</b>	<b>Page</b>
1.1 Introduction	2
1.2 Purpose and indication	2
1.3 Relevant information	3
1.4 Declaration of conformity	3
1.5 Warranty	3
1.6 Service and repair	3
1.7 Practical instructions	3
1.8 Installation in the car	4
1.9 Adjusting the head rest	4
1.10 Using the 3-point-harness	5-6
1.11. Declaration of conformity	7
<b>II. Safety instructions</b>	
2.1 Safety instructions	8
<b>III. Handling and functions of the basic seat</b>	
3.1 Adjusting the internal 5-point-belt	9
3.2 Adjusting the height of the back rest	9
3.3 Adjusting the angle of the back	9
<b>IV. Using the optional accessories</b>	
4.1 ISOFIX-adapter	10-11
4.2 Security tray	12
4.3 Lateral supports	12
4.4 Abduction block	13
4.5 Angular adjustment	13
4.6 Swivel	14
4.7 Seat depth adapter	15
<b>V. Guarantee</b>	16
<b>VI. Labelling</b>	16
<b>VII. Maintenance &amp; product care</b>	
7.1 Pull off the cover	17
<b>VIII. Technical characteristics</b>	18

# I. General information

## 1.1 Introduction

You have chosen the car seat IPAI MAX / IPAI MINI and get hereby a high quality product from our house. We would like to thank you for your trust in us.

To make sure you find joy with this product and to ensure it helps you to make everyday life easier, we present you this manual. It shows you the correct and simple usage and the necessary care and maintenance. To avoid damage due to operator error and to ensure best use, please read the following instructions carefully. If you have any questions or problems, please contact your dealer.

We wish you a trouble-free use and hope that our product meets your expectations.

We reserve the right to make technical changes to the version described in this manual.

Before installing in your car and using it for the first time, please read and follow the installation instructions on pages 4 - 6. Please ensure that the instructions for use remain with the product and are therefore available to everyone who uses the seat.

Yours

HERNIK GmbH

## 1.2 Purpose and indication

The IPAI was developed for the transport of children with special needs in cars. Children with poor head or trunk control (eg infantile cerebral palsy, muscular dystrophy, hypotension) can be supported in their posture by means of individually positioned thorax pads and special upholstery which ensures a safe transportation.

Important optional accessories can be used to address specific needs such as: the seat angle or the installation of a stable abduction wedge or a footstool. More in chapter IV.

# I. General information

## 1.3 Relevant information

The IPAI car seat for disabled children consists of two modules:

1. A standard child car seat from Römer-Britax (please refer to the manufacturer's manual for use)
2. Adaptation module with accessories, which offers the possibility to equip the car seat according to individual needs. Please observe the instructions for use from HERNIK GmbH.

## 1.4 Declaration of conformity

HERNIK GmbH declares in sole responsibility that car seat "IPAI" complies with the Essential Requirements (Appendix 1 of Directive 93/42 EEC). The product is marked with the CE mark according to the above mentioned directive.

## 1.5 Warranty

A warranty can only be accepted if the product is used under the specified conditions and for the intended purposes. The manufacturer is not liable for damage caused by components and spare parts which were not approved by the manufacturer.

## 1.6 Service and repair

Service and repairs on the IPAI may only be carried out by specialized dealers. If you have any problems, contact your local dealer. For repairs you will only receive original spare parts.

## 1.7 Practical instructions

The car seat will be delivered fully assembled. Upon delivery, the dealer will instruct the user how to use the device by using the manual. The specialist dealer should install together with the user the car seat in the car and if available adjust the Isofix.

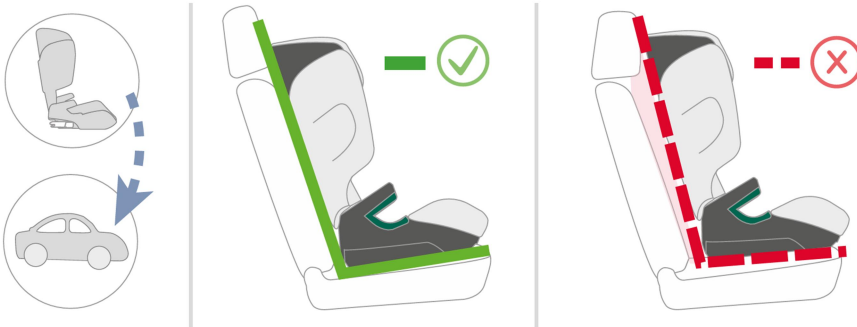
When installing the car seat, it is best to hold it with one hand in the center of the front and the other at the top. In order to achieve an optimal sitting position, it is necessary to adjust the car seat individually to the circumstances of the child. This should always be done by the dealer.

Please note that Isofix adapters are not mandatory as they are not relevant to safety.

# I. General information

## 1.8 Installation in the car

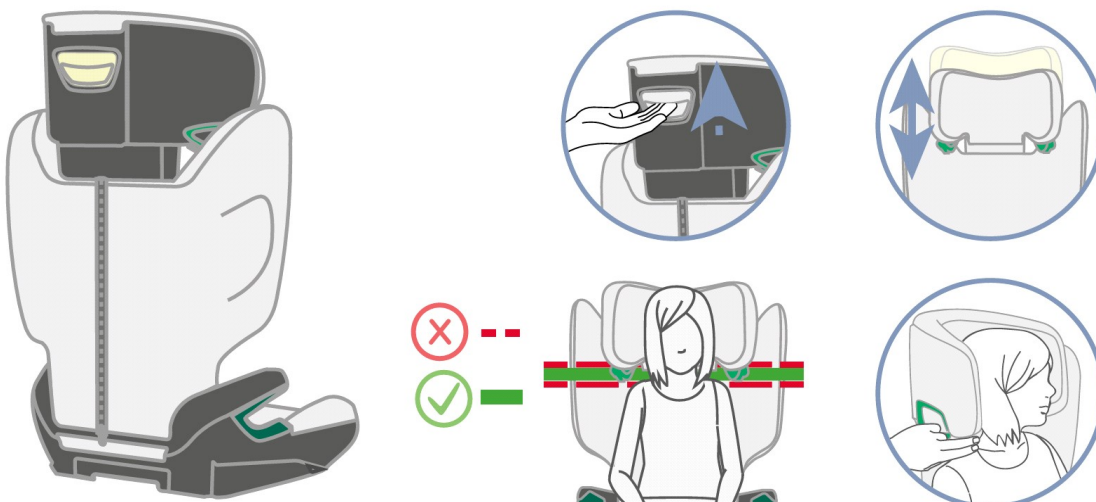
Place the child seat on the vehicle seat. Make sure that the backrest lies flat against the backrest of the vehicle seat. Tip! If the headrest of the vehicle seat disturbs, remove it.



## 1.9 Adjusting the head rest

A correctly adjusted headrest (05) ensures the optimal course of the car's diagonal belt (3-point belt) and offers your child maximum protection. The headrest (05) must be adjusted so that there is still room for two fingers between the shoulders of your child and the headrest (05). This allows you to adjust the height of the headrest to your child's height:

1. Grasp the adjustment handle (06) on the back of the headrest (05) and pull it up. Now the headrest is unlocked.
2. Now you can push the unlocked headrest (05) to the needed height. As soon as you release the adjustment handle (06), the headrest (05) locks.
3. Place the child safety seat on the vehicle seat.
4. Have your child sit in the child car seat and check the height. Repeat this process until the headrest (05) is at the correct height.



# I. General information

## 1.10 Using the 3-point-harness

To be able to absorb the enormous forces during an accident, the IPAI must be secured with the vehicle's three-point belt.

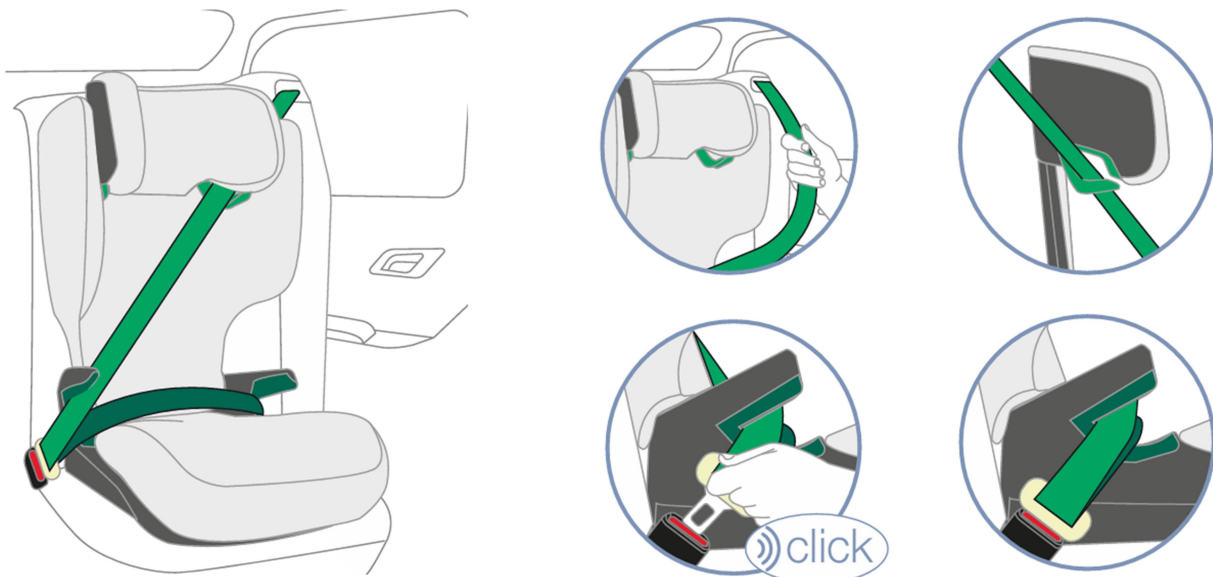
**An ISOFIX connection alone is not enough.**

1. Put your child in the child seat.
2. Pull out the vehicle belt and guide it (in front of your child) to the seat belt buckle.

**DANGER!** Make sure that the vehicle belt is not twisted, otherwise the full protective effect of the restraint system is not given anymore.

3. Lock the latch in the car buckle with a **CLICK**.
4. Place the Diagonal Belt and Lap Belt on the side of the Car Seat Belt Buckle in the dark green belt guide of the car seat.
5. Place the lap belt on the other side of the seat cushion in the dark green belt guide .

**DANGER!** The lap belt (17) must run as low as possible on both sides over the hips of your child.



# I. General information

6. Insert the diagonal belt into the dark green belt holder of the headrest until it is completely and untwisted in the belt holder.

**Tip!** If the backrest hides the belt holder, you can adjust the headrest (upwards. After you inserted the diagonal strap you can set the headrest back to the correct height.

7. Make sure that the diagonal strap runs over your child's collarbone and does not touch the throat.

**Tip!** You can adjust the height of the headrest also while the seat is in the car.

Before every drive, check that...

- ▶▶ the child safety seat is securely fastened;
- ▶▶ the lap belt runs on both sides of the car seat in the dark green belt guides (01),
- ▶▶ the diagonal belt on the side of the buckle also runs in the light red belt guide of the car seat,
- ▶▶ the diagonal strap runs through the dark green belt holder of the headrest,
- ▶▶ the diagonal belt runs diagonally to the back,
- ▶▶ the straps are tight and not twisted.



# I. General information

## 1.11 Declaration of conformity



Gewerbering 8  
83543 Rott am Inn  
info@hernik.de  
www.hernik.de  
+49 8035-9580448  
+49 8035-9580446

### Declaration of Conformity

**Hersteller:** HERNIK GmbH

**Adresse:** Gewerbering 8  
83543 Rott am Inn  
Germany

**SNR:** DE-MF-000011257

**Produkt:** car seat for children with disabilities

**Typenbezeichnung:** IPAI / IPAI-MAX / IPAI-MINI / IPAI-PRO



UDI-PI	Bezeichnung	Artikelnummer
4260675480064	IPAI- red-Black	550000-E2
4260675480071	IPAI- grey-Black	550000-E2

**Classification Med. Dev.:** this is a medical device of class I according to the classification Rules in Annex VIII

I, the signer, declare under sole responsibility that the above product complies with the essential requirements of the following guidelines and standards (Annex 1 of MDR (EU) 2017/745). The conformity assessment was carried out in accordance with Annex IV of the MDR (EU) 2017/745. The product is marked with the CE mark according to the above-mentioned guideline.

- Annex 1 of MDR (EU) 2017/745
- ECE-R129/04 test standard for child car seats

Rott am Inn, 09.10.2024      Andrés Moncayo



Ort, Datum

Name

Unterschrift



## II. Safety instructions

- Before use, the components must be checked for perfect function and condition.
- The instructions for use must always be carried on the child car seat.
- The safety of your child is only guaranteed if the seat is installed correctly and if the child is fixed exactly.
- The straps must be laid tight and without twisting.
- The 3-point safety belt is to be guided through the provided belt guides and is supposed to surround the seat tightly.

Please check:

A) whether the seat belt is securely placed in the belt guide

B) whether the belt buckles are locked correctly

C) that no textiles are impacted

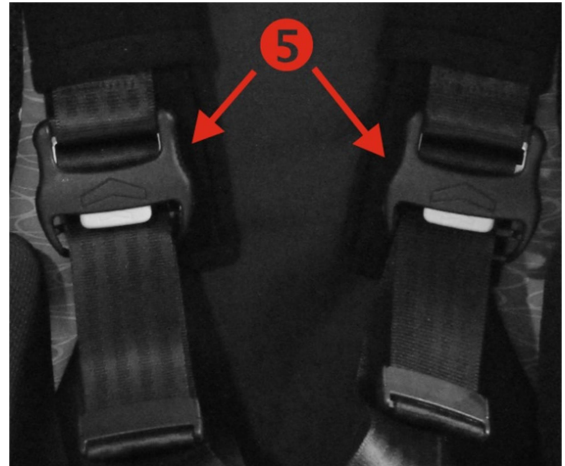
- Make sure that no solid objects like pins, belt buckles, etc. are placed between child and seat belt. This could lead to injuries in the event of accidents.
- Explain to your child how important it is to be well-secured and that the course of the straps do not change. It shouldn't pull on the straps nor open the belt buckles.
- Do not make any changes to the car seat, otherwise you risk your child's safety.
- The car seat must not be damaged by moving parts in the car or through doors.
- Never leave your child alone in the child car seat.
- Inform your passengers how your child can be taken out of the seat after an accident.
- After an accident, the entire child car seat has to be renewed.

### III. Handling and functions of the basic seat

#### 3.1 Adjusting the internal 5-point-belt

Put your child in the car seat and make sure that it sits with the hip at the back. Now put the straps over the child's shoulders. If the strap length is insufficient, press the gray button on the belt adjuster (5) to loosen the belt system.

Then insert the two metal tongues into the belt buckle until they click into place with a click. Then tighten the strap system by pulling the strap ends.



#### 3.2 Adjusting the height of the back rest

Press the release latch in the handle to move the headrest up or down. Make sure that the child's head never looks over the headrest!



#### 3.3 Adjusting the angle of the back

It is possible to adjust the back angle stepless and lock it in any position. This ensures that the car seat is stable in any position. Open the two quick releases and move the back to the desired position. Then close the quick release levers to fix the angle.



## IV. Using the optional accessories

### 4.1 Installation in the car - with ISOFIX

Let the installation of the seat and its adjustment be demonstrated to you by the technician.

The IPAI will be installed tightly with the ISOFIX-locking arms (09) in your car. Your child will then be buckled up with the vehicle's 3-point belt.

1. If your vehicle is not equipped with ISOFIX insertion aids as standard, clamp the two insertion aids (04), which are included in the delivery of the seat, with the cut-out facing upwards, onto the two ISOFIX installation brackets (05) of your vehicle.

TIP! Die ISOFIX fixation points are located between the seat and the back of the vehicle seat.

2. Move the vehicle seat's headrest to its uppermost position.

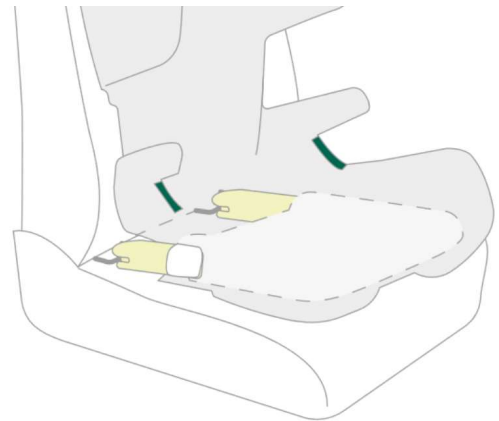
3. Keep pushing the ISOFIX adjustment button (11) and slide the ISOFIX locking arms (09) fully out.

Note! If your seat is equipped with the seat depth adapter, extend the adapter to reach the adjustment button (more on page 15) -

4. Press the locking button (08) and the red release button (07) against each other on both sides of the seat. This ensures that both hooks on the ISOFIX locking arms (09) are open and ready for use.

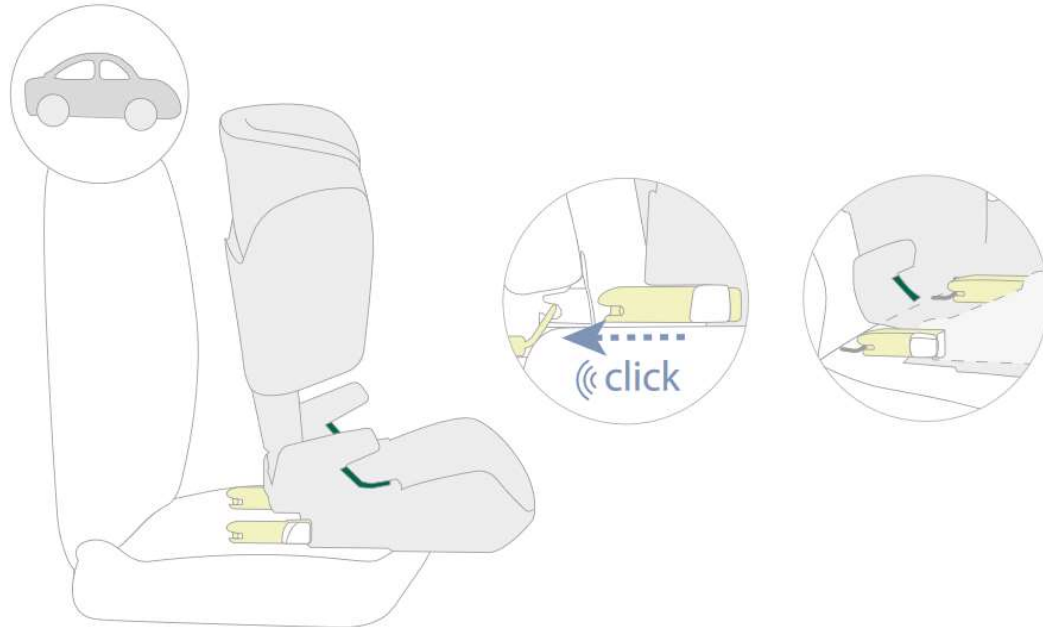
5. Place the child seat in the direction of travel on a vehicle seat approved for use. Make sure that the backrest lies flat against the backrest of the vehicle seat.

6. Position the two ISOFIX locking arms (09) directly in front of the two insertion aids (04).



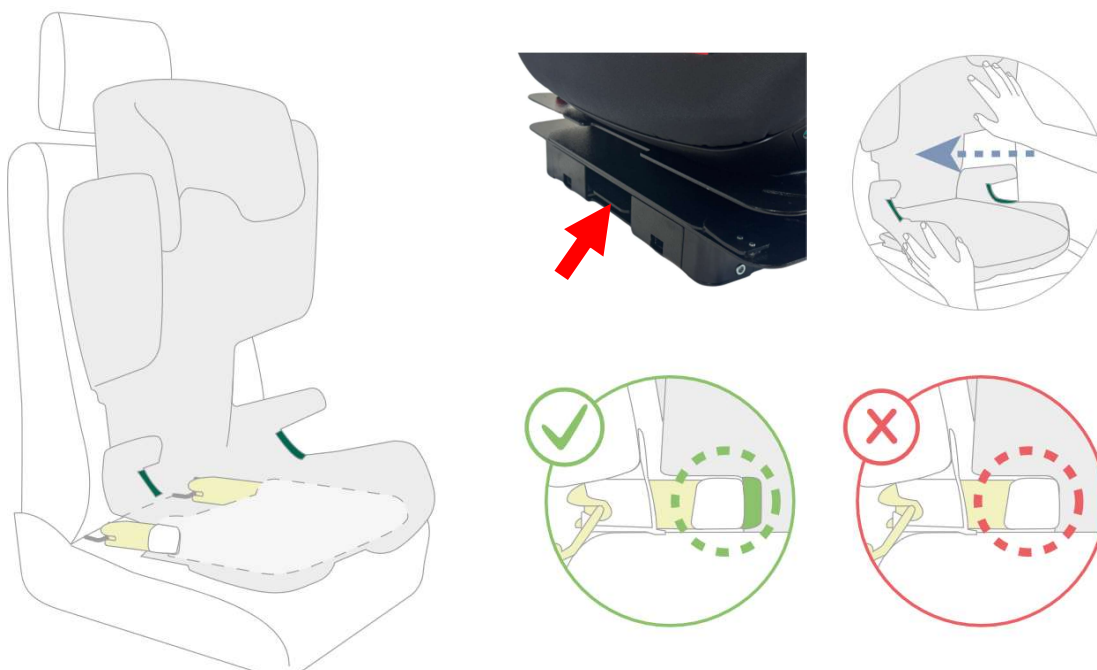
## IV. Using the optional accessories

7. Push both ISOFIX locking arms (09) into the insertion aids (04) until the ISOFIX locking arms (09) snap into place on both sides with a „click“ sound.



8. Keep pushing the ISOFIX adjustment button (11) and push the child seat back as far as possible.

9. Wiggle the child seat to ensure that it is securely attached and check, if the green area (06) is visible on both locking arms.



## IV. Using the optional accessories

### 4.2 Security tray

Installation:

1. Let the installation of the seat and adjustment of it be shown to you during the delivery.
2. Put the support and safety pad on the car seat after sitting your child into it and strapping it on.
3. Secure the padding using the supplied Velcro straps, which are fastened to the back of the car seat.
4. Your child's arms should rest on the table, which leads to an upright seating position. This supports the upper body.
5. Make sure to avoid the risk of toys, which may be on the upholstery. Do not use hard, solid or even sharp-edged objects!



### 4.3 Lateral supports

HERNIK GmbH is not allowed to injure (drill, screw) the body of the IPAI-MAX. Nevertheless it was very important to us to offer lateral supports for children with weak trunk muscles, so we decided for a fixation solution, which uses Velcro for sufficient stability and also provides flexibility.

In order to change the position of the pads, it must first be carefully released by gently turning the Velcro connection. Afterwards, the pad can be arranged freely.

**IMPORTANT:** For a stable fit, the pad should be pressed with high pressure while turning back and forth on the back of the IPAI-MAX / IPAI MINI. This creates a firmer hold of the Velcro elements!



## IV. Using the optional accessories

### 4.4 Abduction block

1. The abduction wedge helps your child to reach a predetermined distance between the knees. In order to loosen or tightening the 5-point belt, the wedge must be removed. Open the clamp and remove the wedge upwards.
2. The wedge should be against the seat upholstery as shown in the picture. The depth of the wedge can be adjusted. For this purpose, both hexagon screws must be opened and offset under the seat.
3. The wedge should always be used while driving (if chosen as an option), otherwise your child could be injured by the mounting.
4. The lever can be changed in its position by gently pulling it forward without moving the screw connection. Make sure it is up and not out of the way, otherwise your child's calves may come into contact with it.



### 4.5 Angular adjustment

1. If the seat angle provided by the vehicle seat is insufficient, the seat angle of the car seat can be increased by the (extended) child seat angle adjustment.

To do this, operate the red ball (see pic.). As soon as the seat is in the desired position, the red ball can be fixed by turning it.



## IV. Using the optional accessories

### 4.6 Swivel

1. To simplify the daily transfer to the vehicle, we recommend our swivel adapter, which let the car seat turn outwards by 90°. For technical reasons, only ONE direction of rotation is possible. For a later change in the other direction, the car seat must be rebuilt in our house. The use of the ISOFIX adapters or the clamp are recommended!

2. To turn the chair, the handle Ⓐ must be pulled up and the chair moved at the same time. The optional footrest stops to avoid collisions with the front passenger seat and the B-pillar.

Pay attention when rotating your child's legs!

3. After the transfer, simply turn the IPAI-MAX/IPAI MINI back to the starting position and pay attention to the "click" sound, in which the tongue snaps back into the catch.



## IV. Using the optional accessories

### 4.7 Seat depth adapter

Adjustment of the seat depth adapter:

The seat depth adapter can be adjusted according to the desired seat depth.

- 1) Loosen the 2 screws on both sides of the car seat using an allen key.
- 2) The seat depth adapter can now be moved to the desired position.
- 3) Fix the 2 screws again.





## V. Guarantee

Hernik products are designed and manufactured in accordance with strict quality standards. If, in exceptional circumstances, you have cause for complaint, Hernik GmbH guarantee in accordance with the terms and conditions of delivery:

- 24 months warranty on all solid parts, from date of delivery.
- 12 months warranty on all moving parts, from date of delivery.

For parts that were not manufactured by Hernik GMBH, please refer to the warranty policy of the respective manufacturer (Römer-Britax Kindersicherheit GmbH). Claims under this guarantee are subject to the device being properly installed and used in accordance with the instructions provided.

Warranty is void where modifications or improper repairs, without prior consultation with the manufacturers are carried out. Warranty is void where a device is improperly fitted.

Further claims, for whatever legal reason, in particular, claims for direct or indirect damages are excluded.

## VI. Labeling

On the back you'll find the following labeling:



**Restraint device for special requirements "S" (EN)**

Please read the user manual before use!



**Restraint device for special requirements "S" (EN)**

Please read the user manual before use!

## VII. Maintenance & product care

### 7.1 Pull off the cover

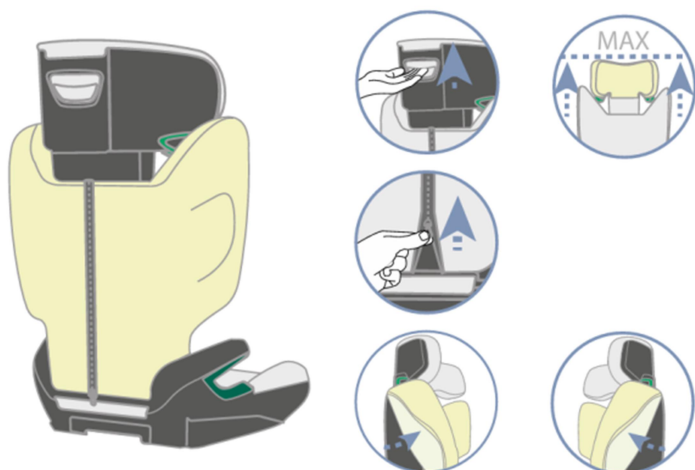
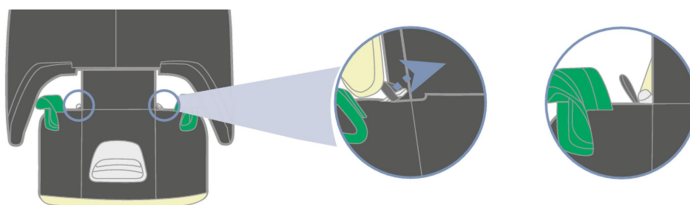
Please ensure that you only use original BRITAX-RÖMER or HERNIK replacement seat covers, as the seat cover is an integral part of the child safety seat and fulfills important functions to ensure the perfect functioning of the seat. Replacement seat covers are available from your Dealer.

The cover can be removed and washed with a mild detergent in the fine washing program of the washing machine (30 ° C). Please refer to the instructions on the washing label of the cover. The plastic parts can be cleaned with soap and water. Do not use harsh cleaning material (such as solvents).

**DANGER!** The child safety seat must not be used without the seat cover.

1. Move the headrest of the car seat to its uppermost position.
2. Unhook the hooks (20) on the back of the backrest (07).
3. Pull off the upper part of the cover.
4. Suspend the reference loops (21) at the bottom at the back of the backrest (07).
5. Remove the cover from the seat cushion (03). Do the same with the headrest cover.
6. Disconnect the reference loops (21) at the back of the headrest (05)
7. Suspend the hooks (20) on the front of the backrest (07)
8. Pull off the cover of the headrest (05).

►► The cover can now be washed.



## VII. Technical characteristics

Technical details\*:

	IPAI-MAX <b>WITHOUT</b> extra cushion	IPAI-MAX <b>WITH</b> extra cushion
SEAT WIDTH (pelvis)	32 cm	26 cm
SEAT WIDTH (knee)	38 cm	38 cm
SEAT DEPTH	33 cm	30 cm
BACK HEIGHT	41 - 56 cm	38 - 53 cm
CROWN HEIGHT	59 - 76 cm	56 - 73 cm
HEIGHT LATERALS	24 - 36 cm	21 - 33 cm
DISTANCE LATERALS	15 - 22 cm	
angle	80° - 120°	
total height	71 - 88 cm	
total width	44 cm	
total depth	44 cm	
weight	from 8,0 kg	

	IPAI-MINI
SEAT WIDTH (pelvis)	25 cm
SEAT WIDTH (knee)	31 cm
SEAT DEPTH	26 cm
BACK HEIGHT	30 - 43 cm
CROWN HEIGHT	52 - 65 cm
HEIGHT LATERALS	17 - 31 cm
DISTANCE LATERALS	14 - 23 cm
angle	80° - 120°
total height	66 - 89 cm
total width	44 cm
total depth	44 cm
weight	ab 8 kg

\* Some dimension may vary depending on the accessories

### Standard equipment:

- 5-point harness with padded buckle pad (height adjustable!) and belt protectors
- Headrest height adjustable
- comfortable back and headrest padding with removable cover (model able foam!)
- three-part basic cover removable and washable at 30 ° C

**Hernik**

HERNIK GmbH  
Am Eckfeld, Gewerbering 8  
83543 Rott am Inn • Germany

 +49 8031-2068044 •  +49 8031-2069215  
 [info@hernik.de](mailto:info@hernik.de) •  [www.hernik.de](http://www.hernik.de)